



BALTIMORE COUNTY
MARYLAND

Baltimore County
Department of Public Works
Bureau of Solid Waste Management
111 West Chesapeake Avenue, Room 225
Towson, Maryland 21204-4604

reduce, REUSE, recycle



Baltimore County
2007

REUSE DIRECTORY

A Directory of Reuse
Organizations for
Baltimore County
Residents and Businesses

Compiled by:
Baltimore County Bureau
of Solid Waste Management

www.baltimorecountymd.gov/recycling



BALTIMORE COUNTY
MARYLAND

Reuse Directory

Choose to Reuse!

This Reuse Directory is a tool for matching people who have materials to donate with organizations that accept those materials for reuse (and sometimes recycling as well). The directory focuses mostly on non-profit organizations, because these places use the donated materials to supply people with resources they might not otherwise be able to obtain.

Baltimore County promotes reuse because there are many advantages over throwing things away.

By donating reusable items, you will:

- Help other people and organizations
- Reduce disposal costs
- Reduce air and water pollution
- Conserve space in our landfill

You may also qualify for valuable tax deductions when you donate certain items.

So, whether you are cleaning out your house or simply replacing an old item with a new one, remember to check this directory and REUSE!

About the Reuse Directory

The Bureau of Solid Waste Management hopes that this directory provides you with the necessary information to make donating items easier. Although care has been taken to ensure this directory is thorough and accurate, it is strongly suggested that you call organizations first before trying to bring materials to their site. An organization's needs and what they accept often change over time.

The listing of an organization does not constitute a Baltimore County endorsement of the organization's products, processes, or services. This directory should not be considered a complete listing of organizations providing the services listed.

If you have any corrections, suggestions, or additions to this directory, please direct your comments to:

Bureau of Solid Waste Management
111 W. Chesapeake Avenue, Room 225
Towson, MD 21204
Telephone: 410-887-2000
Fax: 410-887-2931
E-mail: solidwaste@baltimorecountymd.gov

You can also find this directory online at
www.baltimorecountymd.gov/recycling

How to Use This Directory

The Reuse Directory has two main sections: the Materials Index and the Organizations Index. Use both references to help find the reuse organizations that are best for you.

Check the Materials Index

Review the Materials Index on pages 7 to 16 for an alphabetical listing of materials that can be reused. Underneath each material is a list of the names and phone numbers of organizations that use them.

Choose an Organization

There may be several options for reusing a particular item. Check the Organizations Index on pages 17 to 42 for details about the organizations, which can help you decide which one to choose. This index is in a chart form, and lists organizations alphabetically. It provides addresses, contact names (when given), phone numbers, materials accepted, and details about how to donate.

Donation Procedures and Additional Information

Organizations may have restrictions that may or may not be listed in the Organizations Index. **It is always a good idea to call first to verify what can be donated and if there are any restrictions.** Most organizations have drop-off procedures, and some places have pick-up services available. A few organizations will accept broken items and repair them before they are reused. The Organizations Index also gives a brief summary of how some organizations reuse items to benefit others, and how you could obtain donated items.

Beyond This Directory

“Use it up, wear it out, make it do, or do without.”

Reuse is certainly not a new idea. People have always handed down and given away useful items. Beyond sharing with friends and family, and donating to charities, people have relied on established businesses that specialize in reuse.

Examples include rental centers, thrift stores, and repair shops. Perhaps a repair shop can fix your broken sewing machine, television, or other appliance. Repairing an item often costs less than replacing it. And remember, buying durable products that need fewer repairs will probably save money over the long run.

Check your phone book under “Appliances” (repair and rental), “Rental,” and “Thrift Shops” for reuse businesses near you. Newspaper classifieds, the Pennysaver, auctions, flea markets, and yard sales are also great resources for buying and selling reusable goods.

For materials that cannot be reused, yet are difficult to recycle (including certain thermometers, batteries, and textiles), check out the recycling directory at mdrecycles.org. There you can find listings of organizations that accept various materials that are not recycled by Baltimore County.

Materials Index

The following section is an alphabetical listing of materials that can be reused. Check the Organizations Index (pages 17-42) for details on drop-off and pick-up procedures.

Appliances (Large)

American Rescue Workers	410-566-3300
Baltimore County Animal Control	410-887-5961
Baltimore County Humane Society	410-833-8848
Habitat Hardware	410-366-1250
Salvation Army (The)	410-525-0530

Appliances (Small)/ Household Items

American Rescue Workers	410-566-3300
Baltimore County D.S.S.	410-853-3024
Baltimore Free Store	410-522-0722
Goodwill Industries	410-837-1800
Habitat Hardware	410-366-1250
Purple Heart	410-712-0109
Salvation Army (The)	410-525-0530
Scene II by Hadassah	410-486-9851
Second Chance	410-385-1101
Surprise Shop (The)	410-828-9343



Arts/Crafts Supplies

Augsburg Adult Day Care Center	410-532-3400
--------------------------------------	--------------

Baby Items

Baltimore County D.S.S.	410-853-3024
Community Assistance Network	410-285-4674
House of Ruth	410-889-0840
Salvation Army (The)	410-525-0530
Surprise Shop (The)	410-828-9343



Beds

Goodwill Industries	410-837-1800
Salvation Army (The)	410-525-0530

Bicycles



Baltimore Free Store	410-522-0722
Lutherville Bike Shop	410-583-8734
Race Pace Bicycles	See listing on page 34

Books

American Rescue Workers	410-566-3300
Baltimore County D.S.S.	410-853-3024
Baltimore Free Store	410-522-0722
Book Thing of Baltimore	410-662-5631
Goodwill Industries	410-837-1800
Salvation Army (The)	410-525-0530



Building Materials

Habitat Hardware	410-366-1250
Loading Dock (The)	410-558-3625
Second Chance	410-385-1101

Carpet

Salvation Army (The)	410-525-0530
----------------------------	--------------

Cell Phones and Accessories



Community Assistance Network	410-285-4674
Family Crisis Center	410-285-7496
GRC Recycling	877-744-3601
House of Ruth	410-889-0840
Liberty Recycling	202-566-0638
Salvation Army (The)	410-525-0530
Turtle Wings	410-975-9046
Verizon Wireless	See listing on page 38

Clothing

American Rescue Workers	410-566-3300
Baltimore County D.S.S.	410-853-3024
Baltimore Free Store	410-522-0722
Family Crisis Center	410-285-7496
Goodwill Industries	410-837-1800
House of Ruth	410-889-0840
Plato's Closet	410-583-0590
Purple Heart	410-712-0109
Saint Vincent de Paul	410-276-7600
Salvation Army (The)	410-525-0530
Scene II by Hadassah	410-486-9851
Surprise Shop (The)	410-828-9343



Computers/Electronics and Accessories

Call ahead to see what computers/electronics they are accepting, as this changes frequently.

Baltimore Free Store	410-522-0722
Capital PC Usergroup	301-560-6442
cdm eCycling	410-525-1400
Goodwill Industries	410-837-1800
Phoenix Project (The)	410-916-5281
Salvation Army (The)	410-525-0530
Subtractions, LLC	301-362-4000
Turtle Wings	410-975-9046



Copy Machines

Subtractions, LLC	301-362-4000
Turtle Wings	410-975-9046

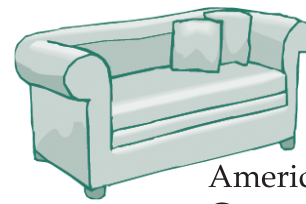
Eyeglasses

Lenscrafters (Towson)	See listing on page 28
-----------------------------	------------------------



Food

Assistance Center of Towson Churches	.410-296-4855
Community Assistance Network	410-285-4674
Earl's Place.....	410-522-0225
Family Crisis Center	410-285-7496
House of Ruth	410-889-0840
Maryland Food Bank	410-737-8282
My Sister's Place	410-727-3523
Our Daily Bread	443-986-9000
Shepherd's Clinic	410-467-7146



Furniture

American Rescue Workers	410-566-3300
Community Assistance Network.....	410-285-4674
Goodwill Industries	410-837-1800
Salvation Army (The)	410-525-0530
Second Chance	410-385-1101

Garden Equipment

Garden Harvest, Inc.	410-526-0698
---------------------------	--------------

Hangers

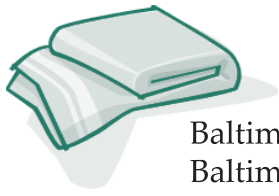
Many dry cleaners will take back the hangers given out with the cleaned clothes.



Household Hazardous Waste (HHW)

Household items, such as automotive fluids, household chemicals, rechargeable batteries, and mercury thermometers, can be taken to the Eastern Sanitary Landfill Solid Waste Management Facility for recycling and/or proper disposal. Household hazardous waste is accepted at this location April through November, Monday through Saturday, 7:30am to 3:30pm. The facility is located at 6259 Days Cove Road (off the 11400 block of Pulaski Highway/Route 40 East) in White Marsh, Maryland.

The County also holds special collection events for these materials from time to time. For more information, contact Baltimore County's Department of Environmental Protection and Resource Management at 410-887-3745.



Linens

- Baltimore City Animal Control410-396-4428
- Baltimore County Animal Control410-887-5961
- Baltimore County D.S.S.410-853-3024
- Baltimore County Humane Society410-833-8848
- Baltimore Free Store.....410-522-0722
- Earl's Place.....410-522-0225
- Goodwill Industries410-837-1800
- House of Ruth410-889-0840
- Salvation Army (The)410-525-0530

Medical Equipment/Supplies

- Baltimore County's Department of Aging410-887-2594
- National Multiple Sclerosis Society, MD Chapter410-527-1770
- Shepherd's Clinic410-467-7146

Music: CD's, DVD's, and Vinyl



- Record and Tape Traders See listing on page 34

Musical Instruments

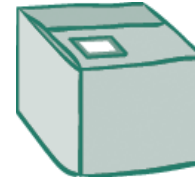


- Guitar Exchange410-747-0122
- Music-Go-Round410-666-3996
- Ted's Music Shop410-685-4198

Office Equipment and Supplies

- Baltimore County Humane Society410-833-8848
- Shepherd's Clinic410-467-7146
- Turtle Wings410-975-9046

Packaging Materials/Styrofoam®



Styrofoam® peanuts and bubble wrap are accepted at packaging service stores, including Mail Boxes Etc., Parcel Plus, and Postman Plus. Check the phone book under "Packaging Service."

- Alliance of Foam Packaging Recyclers410-451-8340
- Liberty Recycling202-566-0638

Paint

Used paint can be taken to the Eastern Sanitary Landfill Solid Waste Management Facility, April through November, Monday through Saturday, 7:30am to 3:30pm. The facility is located at 6259 Days Cove Road (off the 11400 block of Pulaski Highway/Route 40 East) in White Marsh. The paint is reused by The Loading Dock. For more information, call the Bureau of Solid Waste Management at 410-887-2000.



Paper Goods

- Assistance Center of Towson Churches410-296-4855
- Baltimore County Humane Society410-833-8848
- Community Assistance Network.....410-285-4674
- Our Daily Bread443-986-9000
- Shepherd's Clinic.....410-467-7146

Pet Supplies

- Baltimore City Animal Control410-396-4688
- Baltimore County Animal Control410-887-5961
- Baltimore County Humane Society410-833-8848

Printer Cartridges

- Annapolis Office Technologies443-336-3018
- Liberty Recycling202-566-0638

*Many retailers will also accept used printer cartridges for reuse.
Check with your local office supply store for information.*

Refrigerators

- American Rescue Workers410-566-3300
- Habitat Hardware410-366-1250
- Salvation Army (The)410-525-0530



Sports Equipment



- Play It Again Sports410-683-7427

Local recreation centers and P.A.L. (Police Athletic League) centers may accept used sports equipment.

Contact the Baltimore County Department of Recreation and Parks (410-887-3871) or P.A.L. (410-887-2597) for information

Stoves

- American Rescue Workers410-566-3300
- Habitat Hardware410-366-1250
- Salvation Army (The)410-525-0530

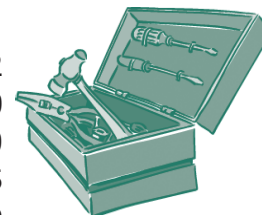


Toiletries

- Assistance Center of Towson Churches410-296-4855
- Baltimore County D.S.S.410-853-3024
- Community Assistance Network.....410-285-4674
- Earl's Place.....410-522-0225
- Hearts and Homes for Youth410-602-5313
- House of Ruth410-889-0840
- My Sister's Place410-727-3523

Tools

- Baltimore Free Store 410-522-0722
- Goodwill Industries 410-837-1800
- Habitat Hardware 410-366-1250
- Loading Dock (The) 410-728-3625
- Salvation Army (The) 410-525-0530



Toys

- Baltimore Free Store410-522-0722
- Goodwill Industries410-837-1800
- Salvation Army (The)410-525-0530



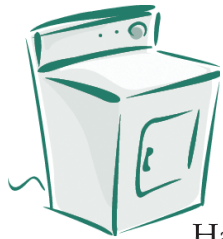
Vehicles

- Salvation Army (The)410-525-0530
- Earl's Place.....410-522-0225

Video Games

- Record and Tape Traders See listing on page 34

Video games can also be sold or traded at many videotape rental stores and computer/electronic stores.



Washers and Dryers

- Habitat Hardware410-366-1250
- Salvation Army (The)410-525-0530

Organizations Index

The following section is an alphabetical listing of reuse organizations. The listing provides details about each organization, what they can accept, and drop-off procedures.

Organization, Contact & Phone Number	Accepted Materials	Drop-off Times and Procedures	Pick-Up Service	Repair Items	End Use of Donations	How Can I Get Items?
Alliance of Foam Packaging Recyclers 1298 Cronson Blvd. Suite 201 Crofton, MD 21114 410-451-8340 Contact: Diana	Clean, white packaging material	Mon – Fri, 9am – 5pm; can drop off during non-business hours also	No	No	Reused for packaging or recycled.	Stop by
American Rescue Workers 2441 W. Baltimore Street Baltimore, MD 21223 410-566-3300	Useable stoves (no gas), refrigerators, appliances, clothes, furniture, household items, educational children’s books	Call first	Yes	No	Sold at the thrift store, given away to families in need; proceeds fund drug and alcohol rehabilitation program, soup kitchen, overnight shelter for homeless.	
Annapolis Office Technologies 561 E. Central Avenue Edgewater, MD 21037 443-336-3018 Contact: Chris Suite	Ink jet and Toner Cartridges	Call to discuss	Yes, for large donations	No	Refilled if possible or melted down to plastic and recycled.	
Assistance Center of Towson Churches 120 W. Pennsylvania Ave. Towson, MD 21204 410-296-4855 Contact: Cathy Burgess	Non-perishable food, toiletries, paper goods, brown paper bags and plastic bags for packing	Mon – Fri, 10am – 3pm	No	No	Food given to less fortunate, and homeless shelters.	Call for more information or come into the center.
Augsburg Adult Day Care Center 6200 Loch Raven Blvd. Towson, MD 21239 410-532-3400 Contact: Brandi Beckner	Crafts, unused paper	Mon – Fri, 6:30am – 6pm	Yes, if local	No	In-house use	

Organization, Contact & Phone Number	Accepted Materials	Drop-off Times and Procedures	Pick-Up Service	Repair Items	End Use of Donations	How Can I Get Items?
Baltimore City Animal Control 301 Stockholm Street Baltimore, MD 21230 410-396-4695 Contact: Jennifer Mead baltimoreanimalshelter.org	Pet supplies, crates, towels, blankets, pet toys	Every day, 8am – 8pm	No	No	Used for the animals at the shelter.	
Baltimore County Animal Control 13800 Manor Road Baldwin, MD 21013 410-887-5961 Contact: Charlotte Crenson-Murrow	Appliances, linens, pet supplies, pet food	Mon – Sat, 10am – 3pm	No	No	Used for the animals at the shelter.	
Baltimore County Department of Aging 611 Central Avenue Towson, MD 21204 410-887-2594	Wheelchairs, commodes, shower chairs; no beds or bed trays, walkers with wheels	Mon – Fri, 8:30am – 4pm	No	No	Reloaned from a medical loan closet to Baltimore County residents aged 60 and older.	Call
Baltimore County Department of Social Services, Volunteer Office 6401 York Road Baltimore, MD 21212 410-853-3024	Seasonal clothing, baby items, books, linens, housewares, small appliances, toiletries (travel size/small hygiene items)	Mon – Fri, 9am – 4pm; see security guard in front of building for assistance	No	No	Given to those in need	Stop by the office Mon – Fri, 9am – 12pm and 1pm – 3:30pm.
Baltimore County Humane Society 1601 Nicodemus Road Baltimore, MD 21136 410-833-8848 hsbcanimals.org Contact: Kirsten Westerfeld	Any pet or animal supplies, appliances, office supplies, laundry detergent, towels, blankets, paper towels	Mon – Sun, 10am – 4pm	No	No	Used in the Baltimore County Humane Society shelter.	

Organization, Contact & Phone Number	Accepted Materials	Drop-off Times and Procedures	Pick-Up Service	Repair Items	End Use of Donations	How Can I Get Items?
Baltimore Free Store 31 North Haven Street Baltimore, MD 21224 410-522-0722 baltimorefreestore.org	Dishes, clothes, toys, tools, electronics, bikes, blankets, games, books, household items; no furniture	Sat and Tues, 10am – 3pm	No	No	Sold at free markets throughout the city and surrounding neighborhoods.	Visit their website for upcoming free market sales.
Book Thing of Baltimore 3001 Vineyard Lane Baltimore, MD 21218 410-662-5631 bookthing.org Contact: Russell Wattenberg	Books, dictionaries	Drop off donations in bin at rear of store at any time	No	No	Given freely to those who need/want them.	Call
Capital PC Usergroup 101 Fleet St. Rockville, MD 20852 301-560-6442 cpcug.org reboot20850@verizon.net Contact: Gerald Rosenkrantz	New and used computer equipment and software; monitors, printers, scanners, keyboards, mice, sound cards, 56K modems with device drivers, speakers, power cords, printer cables, multi GB hard drives, fast CD-ROM drives, and memory chips; laser and ink jet printers must contain usable toner/ink cartridges	Mon: 2pm – 6pm; Wed: 10am – 4pm	No	No	Redistributed without cost to non-profit, educational, faith-based and charitable organizations; helps churches, synagogues, schools, senior centers and other groups that work with low and moderate income families, and other organizations serving the needy.	
cdm eCycling 1623 Wicomico Street Baltimore, MD 21230 410-525-1400 Contact: Mike Fannon	Computers and other electronics	Mon – Fri, 8am – 4:30pm	Call ahead (fees may apply)	Yes	Materials are either refurbished for reuse or recycled.	

Organization, Contact & Phone Number	Accepted Materials	Drop-off Times and Procedures	Pick-Up Service	Repair Items	End Use of Donations	How Can I Get Items?
Community Assistance Network 7701 Dunmanway Baltimore, MD 21222 410-285-4674 canconnects.org	Cell phones, furniture, non-perishable food, toiletries, baby items, new brown bags and plastic bags	Call ahead	No	No	Items go to low-income households.	Call
Earl's Place 1400 E. Lombard Street Baltimore, MD 21231 410-522-0225 Contact: Sheila Helgerson	Food, linens, toiletries, vehicles	Mon – Fri, 9am – 6pm; call ahead	No	No	Used by residents	
Family Crisis Center P.O. Box 3909 Baltimore, MD 21222 410-285-7496 Contact: Rebecca Foster	Cell phones with charger and battery, clothing, food	Mon – Thurs, 9am – 5pm	No	No	Items go to domestic violence house.	Call
Freecycle.org This is a grassroots, nonprofit movement of people who are looking to give and get stuff for free	Thousands of various items that can legally be traded (i.e., toys, furniture, baby items, electronics, etc.)	Post a listing: freecycle.org			This is a peer-to-peer reuse network based on the idea that one person's trash is another's treasure.	Visit the website
Garden Harvest, Inc. 14045 Mantua Mill Road Glyndon, MD 21071 410-526-0698 Contact: Jim Dasher	Any type of gardening or landscaping equipment, clippers, wheelbarrows, gloves, scissors, cardboard boxes, lawn mowers, trimmers	Mon – Fri, 9am – 5pm; call ahead.	Yes; call ahead to request	No	Equipment is used by volunteer farmers to grow food on the farm; the food grown is given to Baltimore County and City organizations that feed the hungry and homeless.	Legitimate organizations that help the hungry and homeless can contact the office.

Organization, Contact & Phone Number	Accepted Materials	Drop-off Times and Procedures	Pick-Up Service	Repair Items	End Use of Donations	How Can I Get Items?
Goodwill Industries 222 E. Redwood Street Baltimore, MD 21202 410-837-1800 goodwillches.org Contact: Tom Gentry	Electronics, clothing, furniture (wood only, no upholstery), housewares, books, small appliances, shoes, toys, blankets, bedframes (no mattresses), tools	Drop-offs can be made at any Goodwill drop off center. See Appendix A for locations and times.	No	No	Items are sold in thrift stores.	Go to thrift store. Visit Appendix A for a list of stores.
GRC Wireless Recycling 877-744-3601 This organization is located in Florida, but you can visit their website at grcrecycling.com	Cell phones	See website	No	No	For each phone donated, up to \$30 is donated to GRC's charity partners.	
Guitar Exchange 740 Frederick Road Catonsville, MD 21228 410-747-0122 Contact: Bruce	Guitars (new, used, or broken); will pay	Call	No	Yes	Items are sold at the store.	Visit store
Habitat Hardware 3326 Keswick Road Baltimore, MD 21211 410-366-1250 Contact: Jessica Williams	Building materials (electrical items, hardware, lighting, cabinetry, plumbing), refrigerators, stoves, tools, washers and dryers, lumber, roofing	By appointment; call ahead.	Call to request	No	Used in the homes that are built and rehabbed for less fortunate families. If the item cannot be used in this way, it is sold and proceeds go towards funding houses.	

Organization, Contact & Phone Number	Accepted Materials	Drop-off Times and Procedures	Pick-Up Service	Repair Items	End Use of Donations	How Can I Get Items?
House of Ruth 2201 Argonne Drive Baltimore, MD 21218 410-889-0840 hruth.org Contact: Carole Alexander	Women's and children's clothing (seasonal items), baby items, toiletries, linens, canned goods, newer cell phones with battery and charger	Call ahead	No	No	Distributed to women and children in local shelters.	If you are a victim of domestic violence, call the 24-hour hotline: 410-889-RUTH.
Lenscrafters Check phone book or website for all store listings and addresses lenscrafters.com	Eyeglasses, prescription or non-prescription sunglasses	Drop off at any retail store during normal business hours	No	Yes	Provided internationally to those who need glasses but cannot afford them.	
Liberty Recycling 10010 Liberty Road Randallstown, MD 21133 202-566-0638 Contact: Steve Witkin	Aluminum pie tins, siding, gutters, doors and windows. Copper plumbing and wire; toner cartridges, cell phones, Styrofoam® packing peanuts, 35mm film canisters	Drop-off trailer open 1st and 3rd Saturday of every month from 12pm – 3pm.	No	No	Materials are either reused or recycled.	
Loading Dock (The) 2 North Kresson Street Baltimore, MD 21224 410-558-3625 loadingdock.org	Building supplies: lighting, cabinets, faucets, sinks, toilets, bathtubs, plumbing, stairs, banisters, doors, windows, roofing supplies, tools, lumber, drywall, plywood	Call for pick-up or drop-off	Yes, for large donations	No	Redistributed to low to moderate income families, nonprofit organizations, and religious groups.	Apply for Loading Dock membership.

Organization, Contact & Phone Number	Accepted Materials	Drop-off Times and Procedures	Pick-Up Service	Repair Items	End Use of Donations	How Can I Get Items?
Lutherville Bike Shop 1544 York Road Lutherville, MD 21093 410-583-8734 Contact: Ron Metzger	Used bicycles, even if broken	Call first	No	Yes	Repaired bikes are donated to St. Ambrose's Outreach Center, St. Vincent's Outreach Center or Bikes for the World.	Contact bike shop or St. Ambrose's.
Maryland Food Bank 2200 Halethorpe Farms Rd. Baltimore, MD 21227 410-737-8282 Contact: Wayne Flickinger	Surplus food, grocery supplies	Mon – Fri, 7:30am – 2:30pm	Yes, for large donations	No	Given freely to needy people by over 500 emergency care providers located in Central Maryland.	Needy people may call MFB for an application. Individuals or families that need more assistance should contact First Call at 410-685-0525
Music-Go-Round 10112 York Road Cockeysville, MD 21030 410-666-3996 Contact: Jim	Working guitars, drums, keyboards, accessories; store will pay	Mon – Fri, 10am – 8pm. Donor must be over 18 years of age.	No	Yes	Items are sold in the store.	Visit store
My Sister's Place 123 West Mulberry Street Baltimore, MD 21213 410-727-3523 Contact: Robin Howell	Female toiletries (soap, toothpaste, toothbrush, conditioner, shampoo, brush, comb, sanitary items), coffee, sugar, tea, hot chocolate	Mon – Fri, 8am – 4pm	No	No	For use at the shelter or for women and children in need.	
National Multiple Sclerosis Society, Maryland Chapter 11403 Cronhill Dr, Suite E Owings Mills, MD 21117 443-641-1191 Contact: Brandy Dorr	Durable medical goods less than 5 years old in good working condition	Call first	Yes	No	Goes to the loan closet to be checked out by persons with multiple sclerosis.	Persons with MS can call and ask for the loan closet. Those who qualify can borrow on a short term or long term basis.

Organization, Contact & Phone Number	Accepted Materials	Drop-off Times and Procedures	Pick-Up Service	Repair Items	End Use of Donations	How Can I Get Items?
Our Daily Bread 725 Falls Way Baltimore, MD 21202 443-986-9000 Contact: Leon Henry	Perishable and nonperishable food, Ziploc® and paper bags	Mon – Sun, 8am – 2:30pm	No	No	Given to seniors, homeless, and disabled people in Baltimore City.	Call
Phoenix Project (The) 1819 E. Preston Street Baltimore, MD 21213 410-534-0499 Contact: Towanda Boston	Computers (at least Pentium III in working condition)	Call ahead	Call	No	Old equipment is recycled. Reusable donations are sent to public schools in Maryland.	Call
Plato's Closet 919 Taylor Avenue Towson, MD 21286 410-583-0590 platoscloset.com	Clothing; gently used, brand name, teen and young adult current style clothing and accessories; store will pay for accepted items	Mon – Sat, 10am – 7pm; Sun, 12pm – 5pm. Call ahead. Items must be in shopping bags or boxes. No hangers, trash bags or loose items.	No	No	Clothing is resold in the stores at up to 70% off mall retail prices.	Visit store
Play It Again Sports 10037 York Road Cockeysville, MD 21030 410-683-7427 Contact: Sean Ainsworth	Sports equipment in good condition	Mon – Fri, 10am – 8pm; Sat, 10am – 6pm; Sun, 11am – 4pm	No	Yes, minimal	Items are sold directly, sold on consignment, or traded for new equipment.	Go to the store
Purple Heart 7272 Park Circle Drive, Suite 120 Hanover, MD 21076 410-712-0109 Contact: Ms. Lang	Clothing and small household items; donations must be in box or bag	Mon – Sat, 9am – 9pm; drop-offs can be made at: 790 North Ave. and 1300 Eastern Blvd.	Yes, door-to-door service	No	Resold in their thrift store; proceeds go to veterans.	Shop at either of their two locations.

Organization, Contact & Phone Number	Accepted Materials	Drop-off Times and Procedures	Pick-Up Service	Repair Items	End Use of Donations	How Can I Get Items?
Race Pace Bicycles Check phone book or website for store listings and addresses racepacebicycles.com Contact: Marc Lefkowitz	Used bikes with a \$10 donation to cover shipping and handling for Pedals for Progress	Mon – Fri, 10am – 8pm; Sat, 10am – 6pm; Sun, 12pm – 5pm	No	Yes	Given to Pedals for Progress which donates used bicycles to needy. This organization also helps developing world economies by promoting self-sustaining bicycle repair businesses.	
Record and Tape Traders Look in phone book or visit website for all store listings and addresses recordandtapetraders.com	Records, CDs, DVDs, video games; store will pay for most used music or give store credit	Mon – Sat, 10am – 9pm; Sun, 12pm – 6pm	No	No	Music is sold in the store.	Visit any store
Saint Vincent de Paul 1123 Wilso Drive Baltimore, MD 21223 410-276-7600 vincentbaltimore.org	Clothing	Visit website for drop-off locations	No	No	Distributed to people through homeless shelters, soup kitchens and outreach centers.	Visit website for distribution information.
Salvation Army (The) 2700 W. Patapsco Avenue Baltimore, MD 21230 410-525-0530 1-800-229-7156 1-800-95-TRUCK	Appliances (large and small), beds, bedding, furniture, rugs, tools, linens, computers, household items, books, cell phones, vehicles, clothes and toys that are in fair and working condition	See Appendix B for store hours and locations	Call ahead	Yes	Some items are redistributed to individuals in need. Sold goods support local adult drug/alcohol rehabilitation programs and other worldwide Salvation Army efforts.	Go to 814 Light Street and fill out an application for the Salvation Army's screening process.

Organization, Contact & Phone Number	Accepted Materials	Drop-off Times and Procedures	Pick-Up Service	Repair Items	End Use of Donations	How Can I Get Items?
Second Chance 1645 Warner Street Baltimore, MD 21230 410-385-1101 secondchanceinc.com	Building materials: lighting, plumbing, windows, doors, antiques, kitchens, bathrooms, furniture, appliances	Tues – Fri, 9am – 4pm	Call ahead for service	No	Items are sold in the store.	Visit their four warehouses all within walking distance of 1645 Warner Street.
Scene II by Hadassah 1500 Reisterstown Road Pikesville, MD 21208 410-486-9851	Clothing, housewares, household appliances	Mon – Thurs, 10am – 5:30pm; Fri and Sun, 10am – 4pm	No	No	Proceeds go to needy people in Israel and around the world.	
Shepherd's Clinic 2800 Kirk Avenue Baltimore, MD 21218 410-467-7146 shepherdsclinic.org Contact: Marlene Sorra	Self-watering pots, rolling exam room stools, lateral file cabinets, 100% juice boxes, coffee, sugar, napkins, bookshelf, printers, paper, food, unopened and unexpired insulin	Tues – Fri, 9am – 5pm	Call ahead to request	No	Donations are used in clinic.	
Subtractions, LLC 9060 Maier Road, Unit 13 Laurel, MD 20723 301-362-4000	Electronics, computers, computer equipment, copy machines	Mon – Fri, 9am – 3pm; fees may apply; make appointment if it's a large donation	Call ahead; fees apply	No	Electronics and computers are reused or recycled.	
Surprise Shop (The) 122 Allegheny Avenue Towson, MD 21204 410-828-9343	Small appliances, clothes (including children's), household items	Mon – Sat, 10am – 4pm	No	No	Items are sold at store or donated.	Go to store

Organization, Contact & Phone Number	Accepted Materials	Drop-off Times and Procedures	Pick-Up Service	Repair Items	End Use of Donations	How Can I Get Items?
Ted's Music Shop 11 E. Center Street Baltimore, MD 21202 410-685-4198 Contact: Fernando Roman	Broken or working musical instruments, no pianos	Mon – Fri, 9:30am – 6pm; Sat, 9:30am – 5pm	No	Yes	Repaired instruments are given away, and spare parts are given to local sculptors for artwork.	
Turtle Wings 1771 Olive Street Capitol Heights, MD 20743 410-975-9046 Contact: Tynell Johnson	Electronics, computers, printers, cell phones, pagers, mainframes, copy machines, office equipment, battery power supplies, telecom equipment. Certified data destruction service available.	Mon – Fri, 8:30am – 4pm. Nominal fee applies. Call for details	Yes, with a small fee	Yes	Materials are either refurbished or dismantled and then recycled.	
Verizon Wireless Check phone book or website for store listings and addresses verizonwireless.com	Used cell phones and accessories	Drop off at any retail store during normal business hours	No	Yes	Phones are refurbished and given to organizations dealing with domestic violence.	

Appendix A

Goodwill Donation Centers
office phone number 410-837-1800

Thrift Stores

Bel Air 410-879-8001
711 A Baltimore Pike
Mon – Sat, 9am – 9pm
Sunday, 12pm – 5pm

Carroll Island 410-344-1032
138 Carroll Island Road
Mon – Sat, 9am – 9pm
Sunday, 12pm – 5pm

Eastpoint 410-282-8750
7928 Eastern Blvd.
Mon – Sat, 9am – 9pm
Sunday, 11am – 6pm

Elkton 410-620-1281
Marina Plaza
208 S Bridge Street
Mon – Sat, 9am – 8pm
Sunday, 11am – 6pm

Owings Mills 410-581-8960
11411 Reisterstown Road
Mon – Sat, 9am – 9pm
Sunday, 12pm – 5pm

Padonia 410-666-7929
200 West Padonia Road
Mon – Sat, 9am – 9pm
Sunday, 12pm – 5pm

Perry Hall 410-248-0070
8818 Belair Road
Mon – Sat, 9am – 9pm
Sunday, 12pm – 5pm

Pikesville 410-358-8411
6999 Reisterstown Road
Mon – Sat, 9am – 9pm
Sunday, 12pm – 5pm

Security Station 410-448-9368
1700 N. Rolling Road
Mon – Sat, 9am – 9pm
Sunday, 12pm – 5pm

Towson 410-663-2192
1753 E. Joppa Road
Mon – Sat, 9am – 9pm
Sunday, 12pm – 5pm

Appendix A (continued)

Goodwill Donation Centers
office phone number 410-837-1800

Drop-off Trailers

Bel Air
711 A Baltimore Pike
(at rear of store)
Mon – Sat, 9am – 5pm
Sunday, 12pm – 4pm

Eastpoint
7928 Eastern Blvd
Mon – Sat, 9am – 9pm
Sunday, 11am – 6pm

Hereford
Hereford Shopping Center
I-83 & Mt. Carmel Road
1st Saturday of each month
9am – 5pm

Liberty Road
Metro Store
8212 Liberty Road
Saturday, 9am – 5pm

Owings Mills
11411 Reisterstown Road
(at rear of store)
Mon – Sat, 9am – 5pm
Sunday, 12pm – 4pm

Padonia
200 W. Padonia Road
(at rear of store)
Mon – Sat, 9am – 5pm
Sunday, 12pm – 4pm

Perry Hall
8818 Belair Road
(at rear of store)
Mon – Sat, 9am – 5pm
Sunday, 12pm – 4pm

Security Station
1700 N. Rolling Road
(at rear of store)
Mon – Sat, 9am – 5pm
Sunday, 12pm – 4pm

Timonium
Yorkridge Shopping Center
York & Ridgely Roads
Daily, 9am – 5pm

Appendix B

The Salvation Army
office phone number 410-525-0530

Drop-off Centers

Baltimore City 410-783-2920
814 Light Street
Mon – Sat, 10am – 6pm

Baltimore 410-525-0530
2700 West Patapsco Avenue
Mon – Sat, 8am – 4pm

Ellicott City Wal-Mart Trailer
(Rt. 29 & Rt. 40)
(Bags and Boxes Only)
Mon – Sat, 10:30am – 3:30pm

Middle River 410-682-2450
1400 Fuselage Avenue
Mon – Sat, 10am – 6pm

Glen Burnie 410-768-0477
511 South Crain Highway
Mon – Sat, 10am – 6pm

Westminster 410-876-9358
300 Hahn Road
Mon – Sat, 10am – 6pm

Thrift Store Locations

Baltimore City 410-644-9705
2250 Gable Avenue
Mon – Sat, 10am – 6pm

Randallstown 410-655-9399
8715 Liberty Road
Mon – Sat, 10am – 6pm

Parkville 410-663-3915
1748 E. Joppa Road
Mon – Sat, 10am – 6pm

Severna Park 410-421-5330
574-C Ritchie Highway
Mon – Sat, 10am – 6pm

Pasadena 410-766-4841
8005 Jumpers Hole Road
Mon – Sat, 10am – 6pm